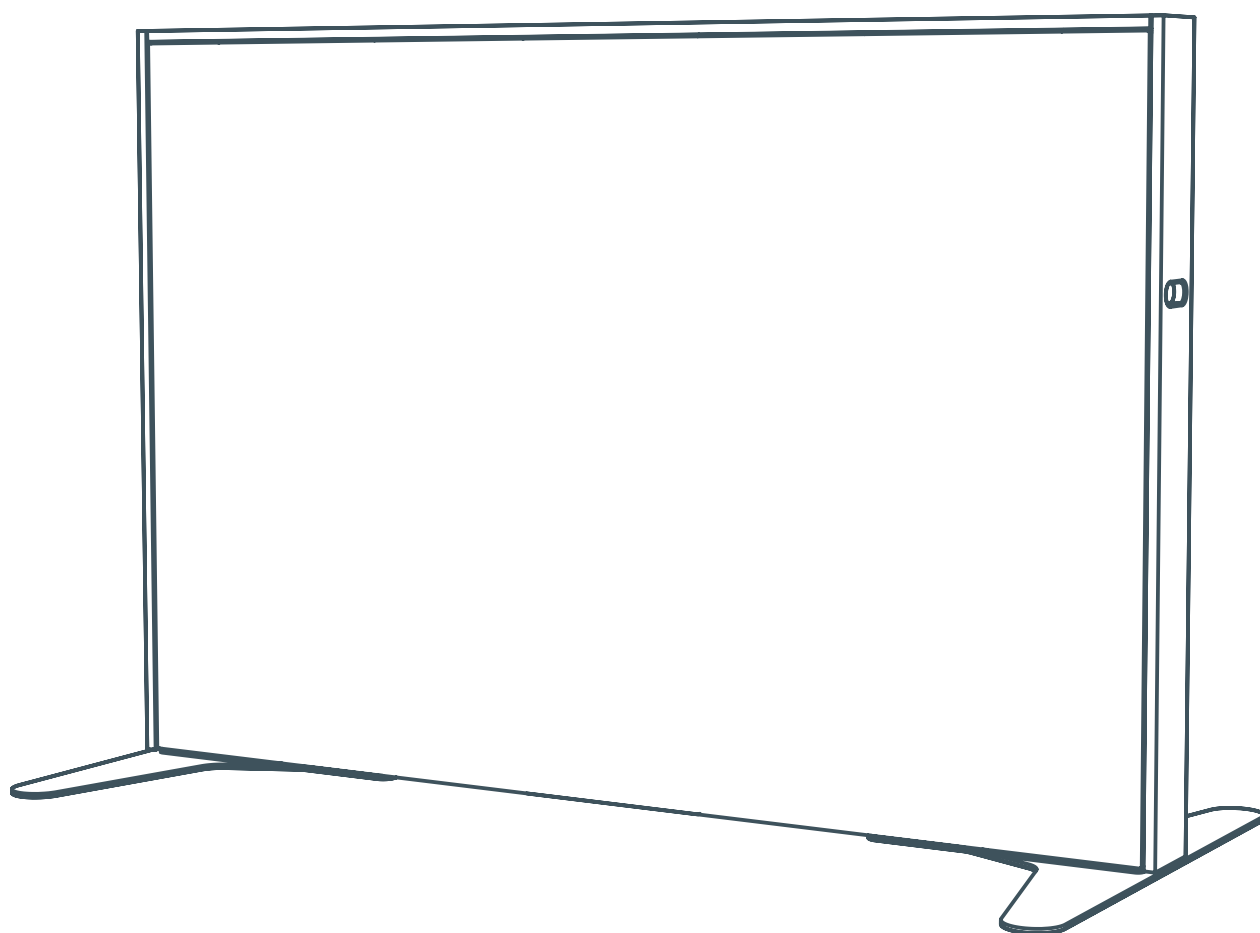


sound wall

Assembly Instructions

furnware®



assembly health and safety



Assemble with care



Two person assembly



Do not climb on Panel



Recycle all packaging



Lift correctly with care



Hand Protection recommended



Protect Surfaces

Follow all instructions with care. Handle all components with care. Do not assemble the product without following these assembly instructions provided by this guide.

Sound Wall parts are made of untreated engineered timber materials. During assembly use gloves to protect hands from splinters. During use avoid abrasive materials dislodging wood fragments causing splinters and/or damaging clothing/the product. All engineered timber used in Sound Wall are to ISO 12460 standards.

Sound Wall parts are made of untreated engineered timber materials that contain phenol formaldehyde resins. Only engineered sheet products with an emission class of 0 or better is used in Sound Wall

Sound Wall parts are heavy once assembled and safe lifting requirements must be maintained at all times. Unlined Sound Wall panels measuring up to 1.2m x 2.4m may be lifted by an individual. Lined panels, joined panels and/or panels of a greater dimensions must be moved by at least two people.

When standing, joining and/or connecting Sound Wall panels ensure care is taken to ensure each panel is always supported. Do not leave single panels standing without perpendicular or intersecting panels fully connected. Ensure hands and fingers are clear of panel joints when connecting panels.

For the protection of the product, and to protect the objects and surfaces near your product, it is recommended that the product is placed on a protected surface during assembly (such as carpet or carpet tiles).

All Sound Wall products are designed for indoor use only.

Do not stand on Sound Wall and do not use Sound Wall as a step-ladder.

During assembly take care to not over tighten or use excessive force as this may damage the product.

Where possible assemble the Sound Wall near the area in which they will be placed to avoid moving the item unnecessarily.

The Sound Wall is large and require ample space for assembly. Please ensure that you have sufficient space before beginning.

Ensure all parts are present before assembling. If parts are missing please contact Furnware.

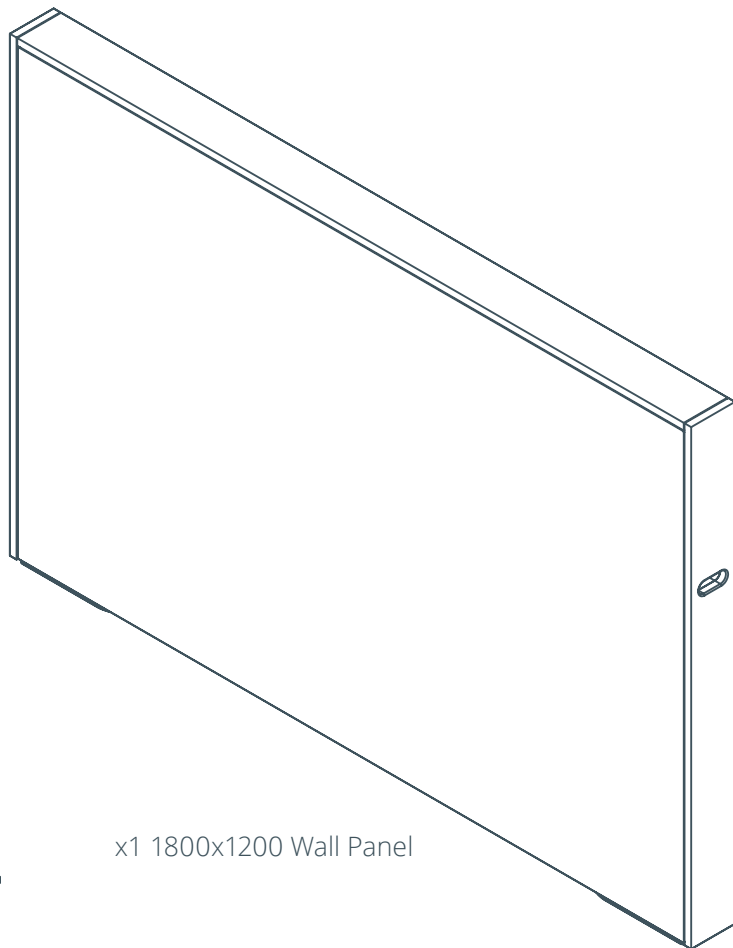
sound wall horizontal - 1800x1200 parts



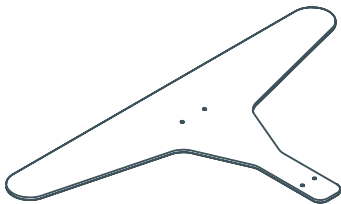
x1 M6 Allen Key



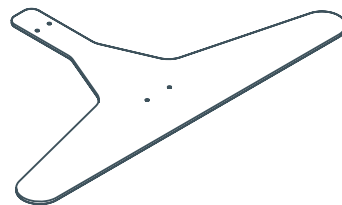
x8 M6
Countersunk Screw



x1 1800x1200 Wall Panel

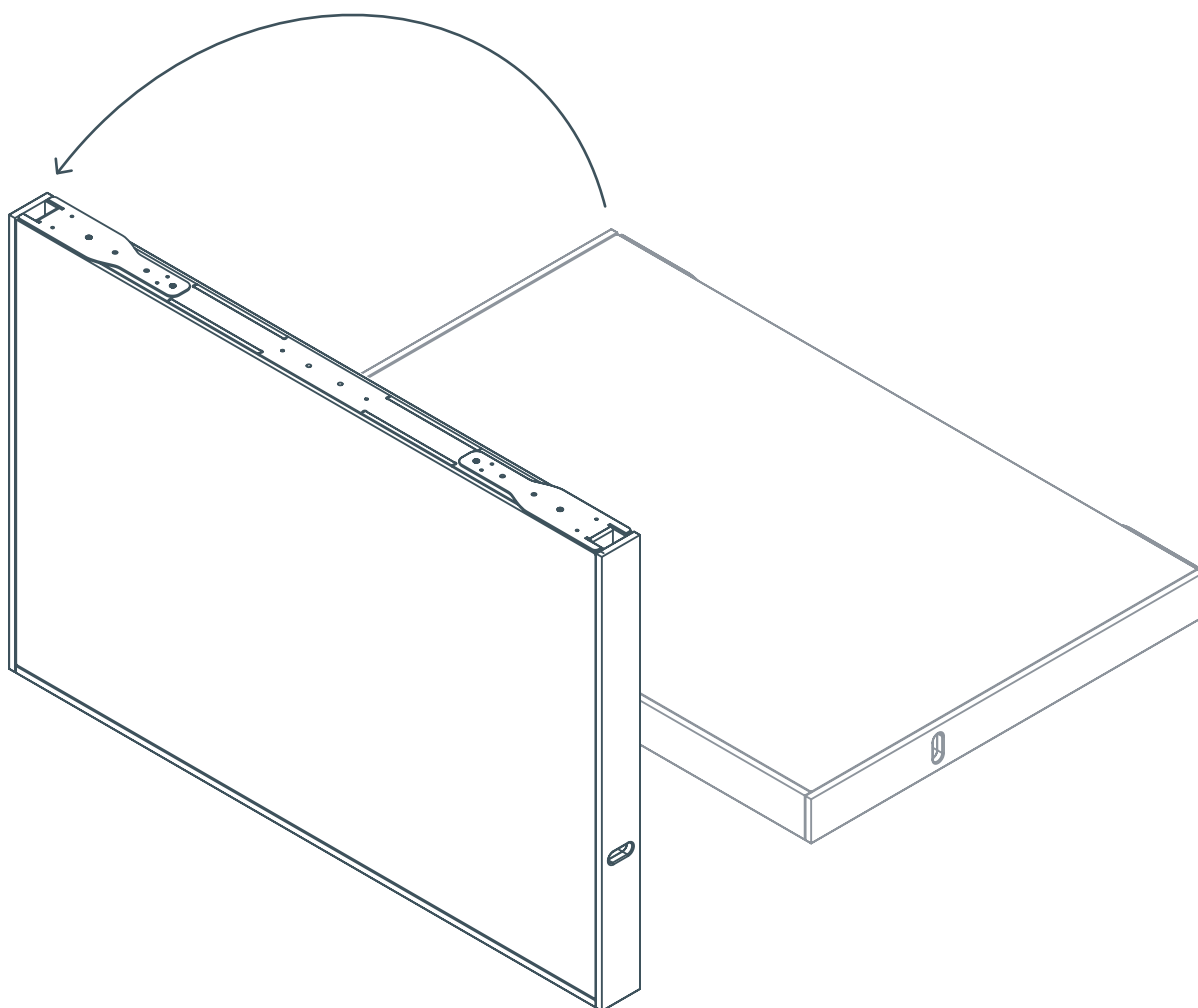


x2 Steel Feet

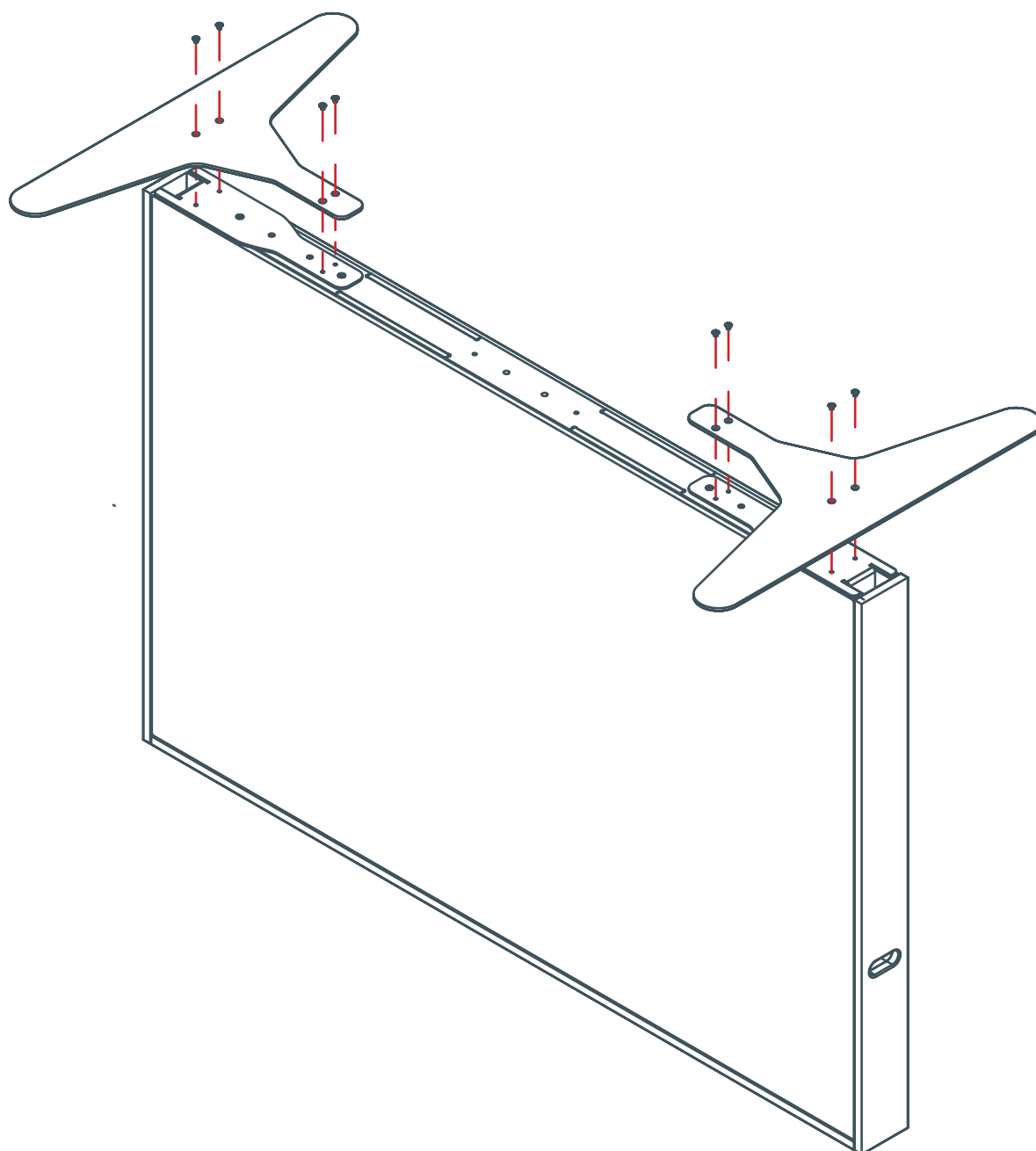


assembly instructions

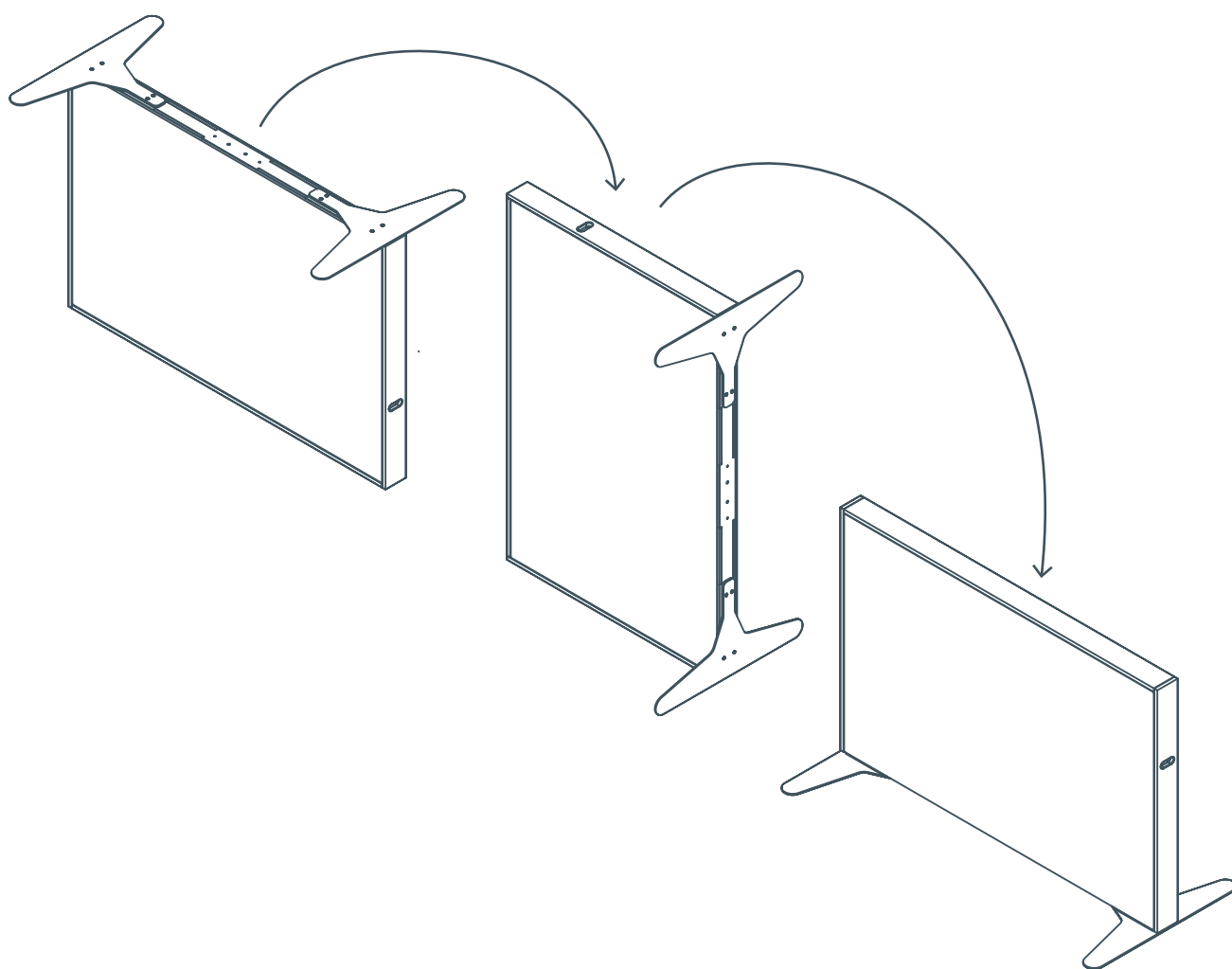
01. Stand panel upside down.



02. Fix foot plate with M6 Screws.



03. Stand panel correct side up.



04. Finished.

